

Cynomolgus PLAU/uPA Protein (active form)

Cat. No. PLA-CM101

Description	
Source	Recombinant Cynomolgus PLAU/uPA Protein (active form) is expressed from HEK293 with His tag at the C-Terminus. It contains Ser21-Leu430, which consists of two chains: Long chain A and chain B. The long chain A is further cleaved to yield a short chain A and N-Terminus fragment.
Accession	A0A2K5WND1
Molecular Weight	The protein has a predicted MW of 47.23 kDa. Due to protein lysis and glycosylation, the protein migrates to 23-25 kDa (long chain A), 35-40 kDa (chain B) and 50-60 kDa (long chain A&chain B) based on Bis-Tris PAGE result.
Endotoxin	Less than 1EU per µg by the LAL method.
Purity	> 95% as determined by Bis-Tris PAGE > 95% as determined by HPLC

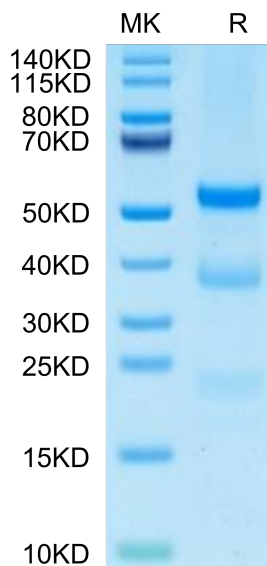
Formulation and Storage	
Formulation	Lyophilized from 0.22µm filtered solution in PBS (pH 7.4). Normally 8% trehalose is added as protectant before lyophilization.
Reconstitution	Centrifuge the tube before opening. Reconstituting to a concentration more than 100 µg/ml is recommended. Dissolve the lyophilized protein in distilled water.
Storage	-20 to -80°C for 12 months as supplied from date of receipt. -80°C for 3 months after reconstitution. 2-8°C for 2-7 days after reconstitution. Recommend to aliquot the protein into smaller quantities for optimal storage. Please minimize freeze-thaw cycles.

Background

Plasminogen activator, urokinase (uPA) is a secreted serine protease whose Dysregulation is often accompanied by various cancers. PLAU inhibition could suppress tumor growth. Collectively, PLAU is necessary for tumor progression and can be a diagnostic and prognostic biomarker in HNSCC.

Assay Data

Bis-Tris PAGE



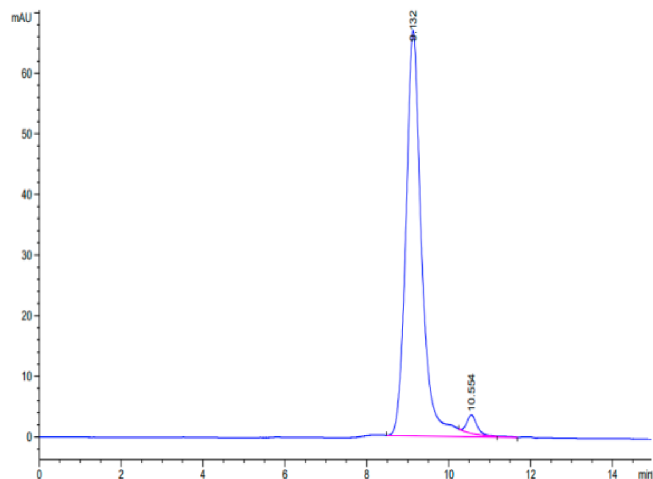
Cynomolgus PLAU (active form) on Bis-Tris PAGE under reduced condition. The purity is greater than 95%.

SEC-HPLC

Cynomolgus PLAU/uPA Protein (active form)

Cat. No. PLA-CM101

Assay Data

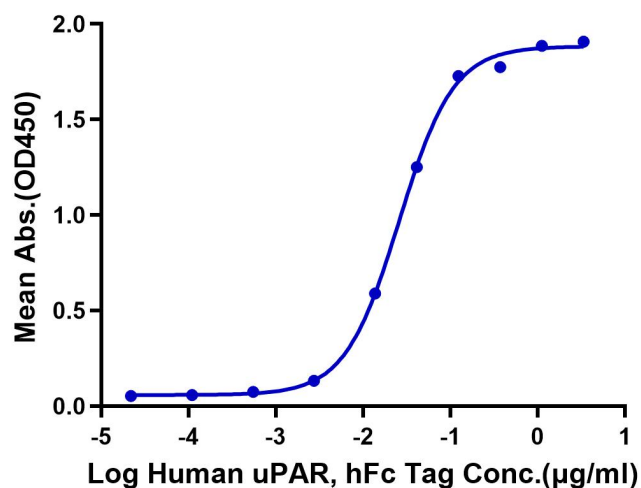


The purity of Cynomolgus PLAU (active form) is greater than 95% as determined by SEC-HPLC.

ELISA Data

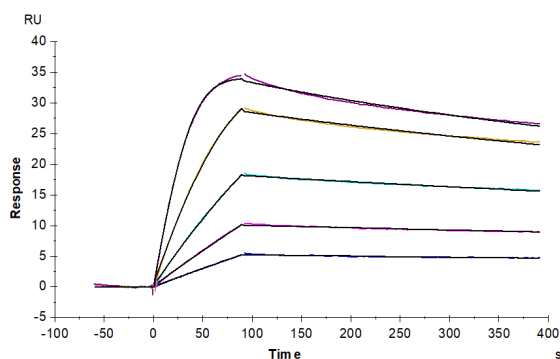
Cynomolgus PLAU, His Tag ELISA

0.1µg Cynomolgus PLAU, His Tag Per Well



Immobilized Cynomolgus PLAU, His Tag at 1µg/ml (100µl/well) on the plate. Dose response curve for Human uPAR, hFc Tag with the EC50 of 25.1ng/ml determined by ELISA.

SPR Data



Cynomolgus uPAR, His Tag immobilized on CM5 Chip can bind Cynomolgus PLAU, His Tag with an affinity constant of 0.033 nM as determined in SPR assay (Biacore T200).

Bioactivity Data

Measured by its ability to cleave a peptide substrate, N-carbobenzyloxy-Gly-Gly-Arg-7-amido-4-methylcoumarin (Z-GGR-AMC). The specific activity is >2000 pmol/min/µg (QC Test).